

# REVISION of OPTIMUM II

2018\_10\_16

**SIGMA**

# **THE CONTENTS OF THE CHANGE**

(ver.1.5.1)  
(ver.1.6.1 for TOSHIBA M343)

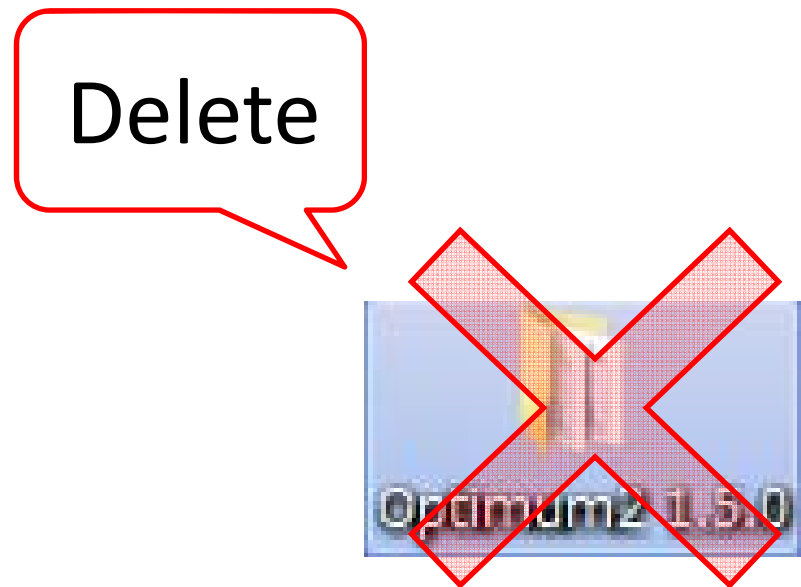
- Fixed small bugs (ver1.5.1)
- Compatible with focus adjustment of the model 730  
(ver.1.6.1 for TOSHIBA M343)

# **IMPORTANT NOTICE**

- Updating FW II box version is required. (Refer to the following pages)

# PROCEDURE

1. Delete previous Optimum 2 folder from your computer.



2. Download the new Optimum 2 ver 1.5.1 and 1.6.1 for TOSHIBA M343 folders from Box.com

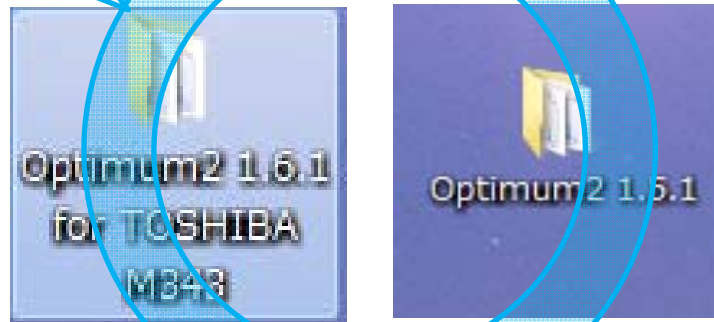
Optimum2 1.5.1:

<https://sigma.box.com/s/y2ahyuoyj0366ey2i8faw3rh3ewd68ve>

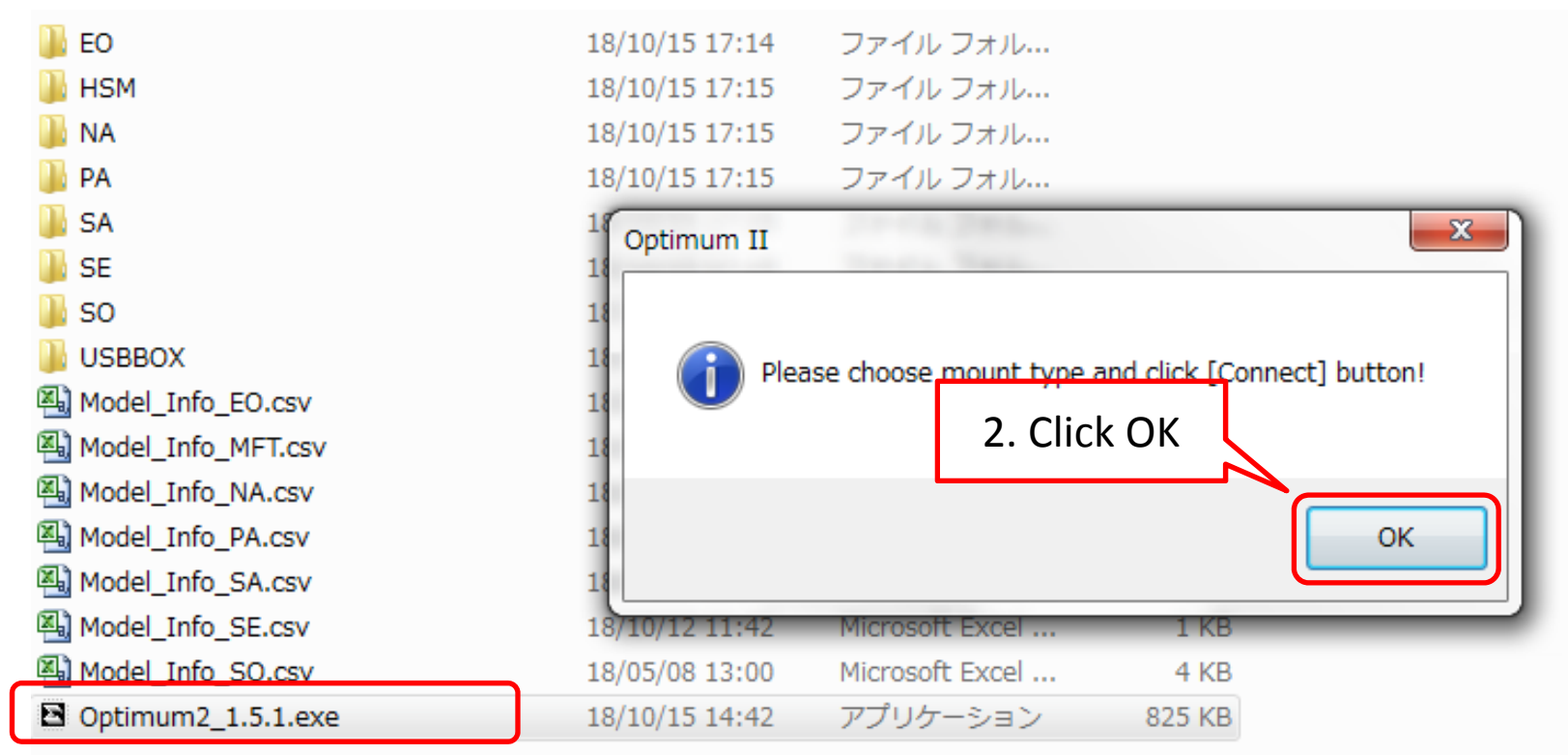
Optimum2 1.6.1 for Toshiba M343:

<https://sigma.box.com/s/3r6rx1dsi4tcn9jr642wf2uxdj1auwz0>

Download

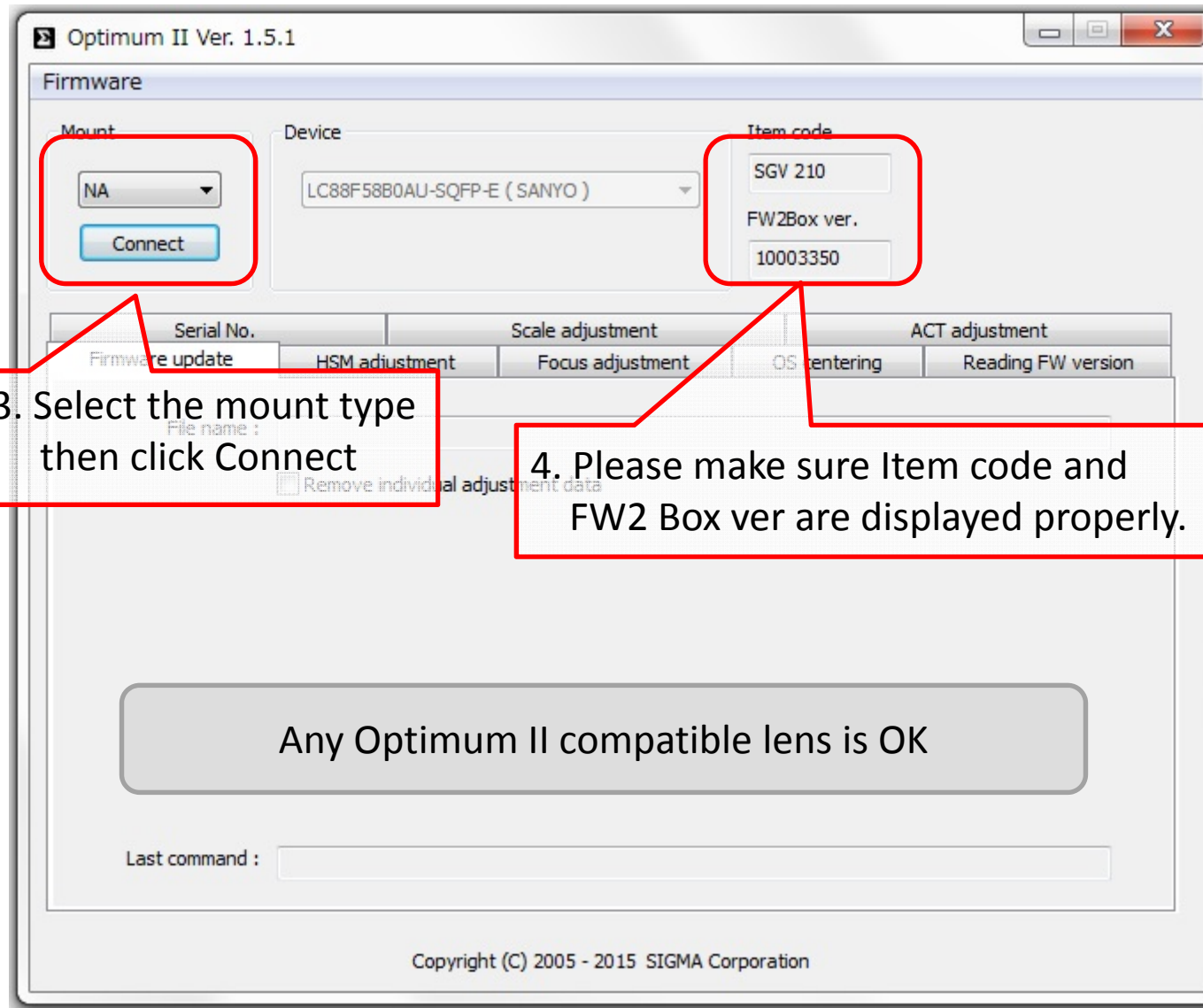


### 3. Firmware version update of FW II is necessary

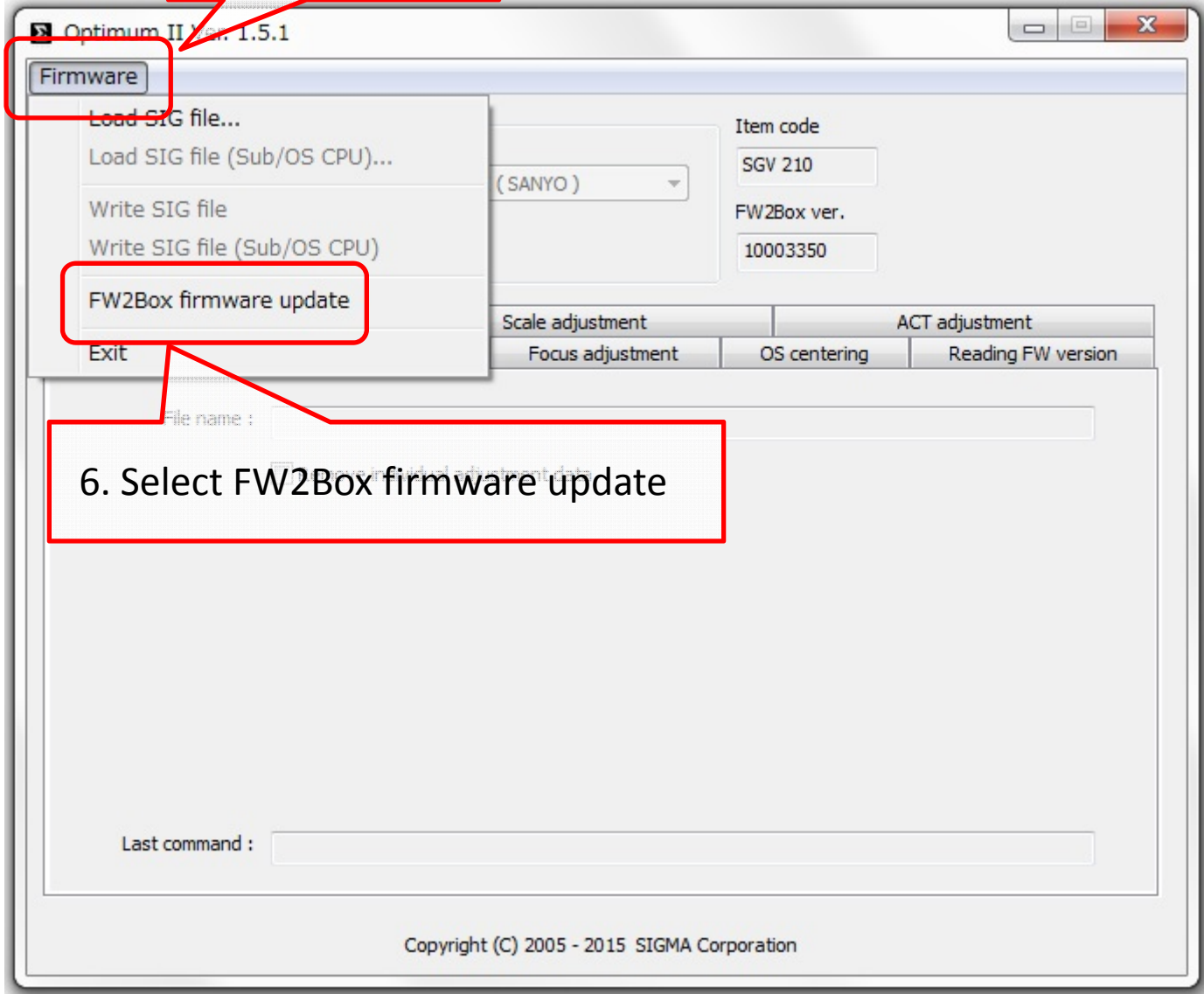


1. Run the application

2. Click OK

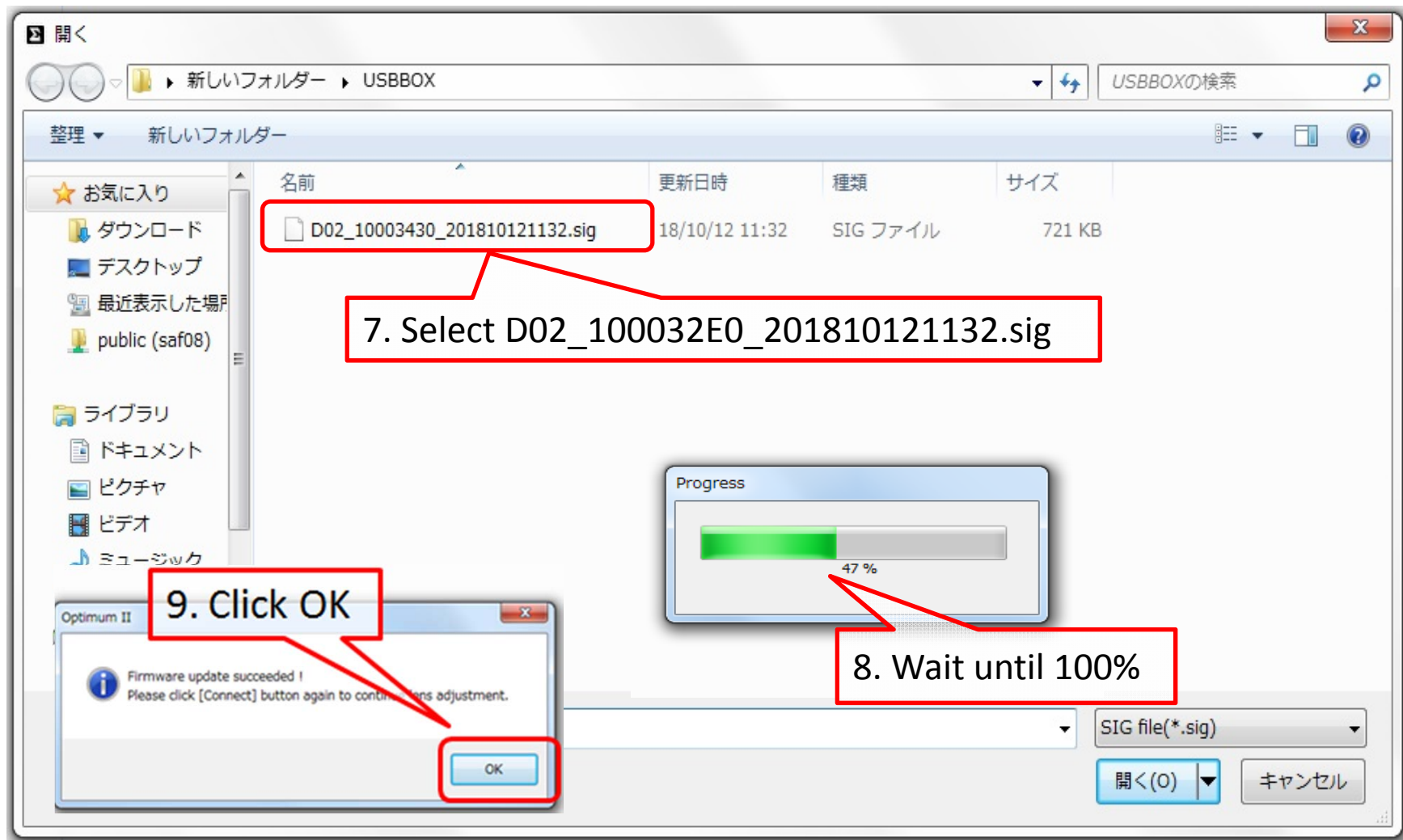


5. Click Firmware



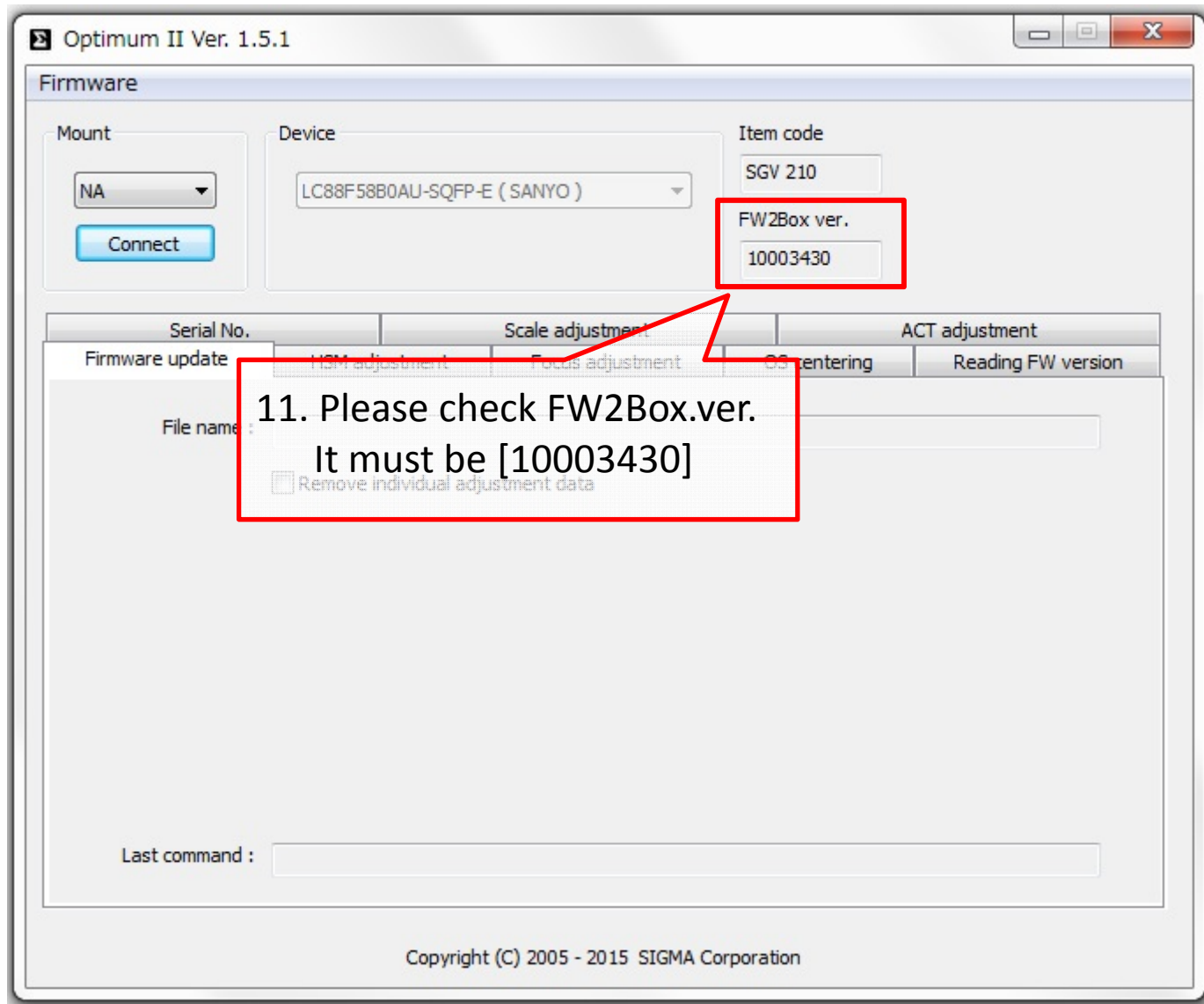
6. Select FW2Box firmware update





10. Restart the Optimum II application

**SIGMA**



**SIGMA**